

PHOTO BY MEG MOORE/megpix.com



BY **CHARLES DICKENS**

ADAPTED AND DIRECTED BY **COURTNEY SALE**

DECEMBER 11-29, 2024



MERRIMACK REPERTORY THEATRE
WWW.MRT.ORG | 978.654.4678



Wealth Management is far more than investing

Enterprise Wealth Management helps you plan, grow, and protect your whole financial health, now and in the future.

Our comprehensive Wealth Management Services include:

- Investment Management
- Financial, Retirement, and Estate Planning
- Trust and Fiduciary Services



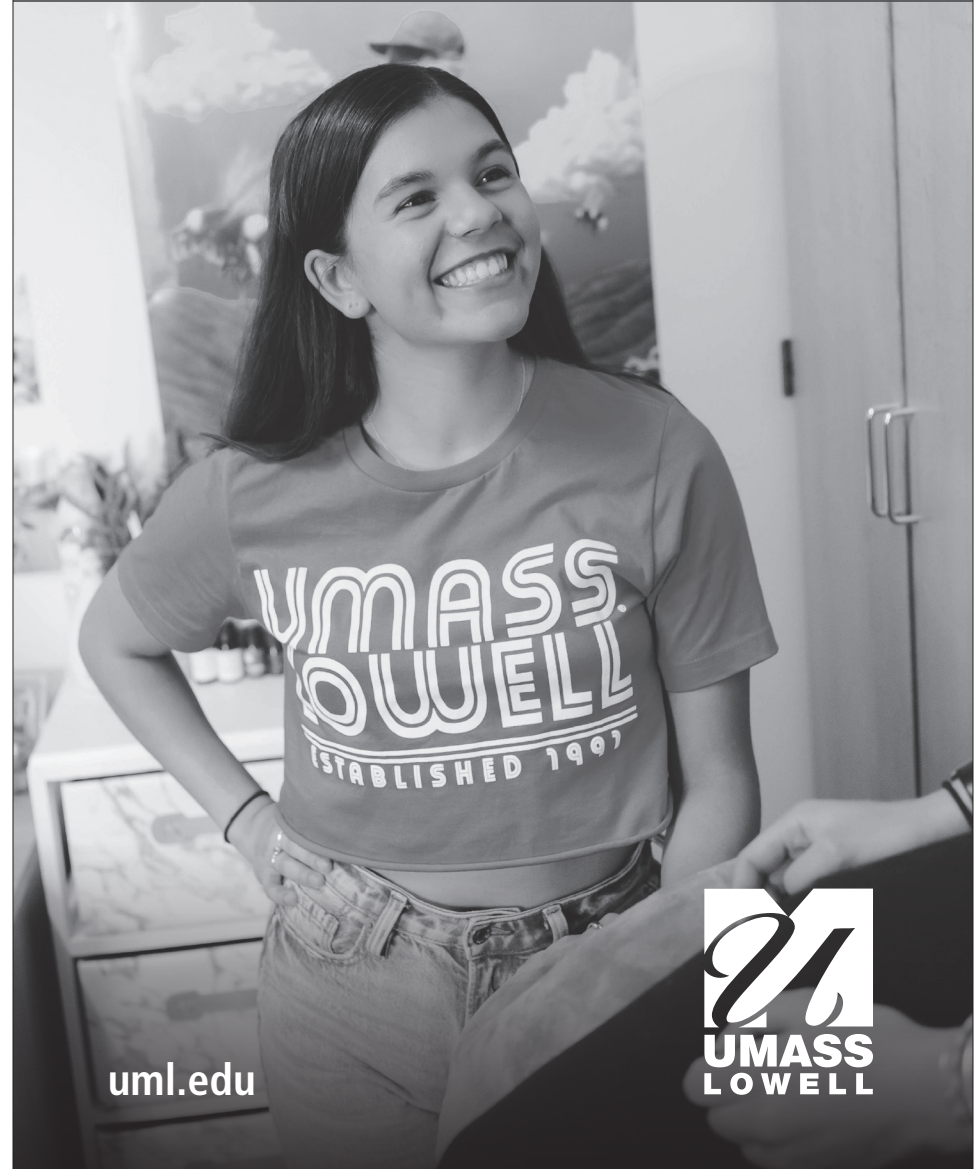
ENTERPRISE
WEALTH MANAGEMENT

A division of Enterprise Bank

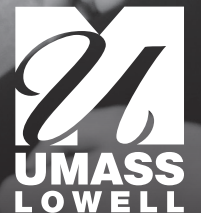
877-325-3778 | EnterpriseBanking.com/wealth-management

Investment products are not a Deposit, not FDIC Insured, not guaranteed by Enterprise Bank, not Insured by any government agency and may lose value.

UMASS LOWELL is proud to support
the Merrimack Repertory Theatre.
Congratulations on your 46th season!



uml.edu



COURTNEY SALE

NANCY L. DONAHUE EXECUTIVE ARTISTIC DIRECTOR



Dear MRT Community,

Happy Holidays and welcome to the third show of our 46th season! Whether you are a long-time subscriber or attending your first MRT show, we hope you will continue to engage with us throughout the year. We're proud to present the redemptive power of *A Christmas Carol* for a third consecutive year. In the literal darkest time of the year, we gather around stories that inspire light, transformation, and community.

Dickens' famous quote, "There is nothing in the world so irresistibly contagious as laughter and good humor," captures the spirit of this classic tale, which draws inspiration from the history of our hometown. During his 1842 tour of America, Dickens visited the Lowell Mills, and many scholars believe the writings of the mill girls influenced his beloved holiday story. Our production pays homage to that scholarship. Bringing this timeless work to our Lowell stage is truly an honor.

I have had a tremendous time in the last few weeks working with this company of professional actors. Returning this holiday season is the wildly talented Karen MacDonald reprising her role as Scrooge and Charles Dickens. Karen enjoys a long history of collaboration with MRT and every time it is a joy to see

WELCOME!

THIS IS A DIVERSE, INCLUSIVE, ACCEPTING,
AND SAFE SPACE.

her capture the hearts of audiences. We are grateful to welcome back to the MRT stage Alexis Bronkovic, Tom Coiner, John Patrick Hayden, and Chris Thorn. Special nod to Heather Conti-Clark (Middlesex Community College graduate) who joins us for the first year. These are formidable artists who embrace the story with full heart. We are grateful to lift up the work of our local youth cast, whose talents and dedication inspire me as they light up the stage. Huge appreciation to their parents and guardians who have partnered with us to make their performances possible – thank you for your support and for all you do for them and us. It has also been beyond joyous to work closely again with this outstanding design team, whose every choice is filled with such great creativity and care. We could not do any of this without the dedicated MRT staff, Trustees, and volunteers.

As for you, our audience, your support throughout the year has been the greatest gift we could ask for! We hope you will consider MRT in your year-end giving. Our creative work is always inspired and fulfilled when we hear you gasp or laugh, and we love watching everyone come together for our performances. Thank you for joining us in cherishing the present together, and I hope that you enjoy MRT's *A Christmas Carol*.

In Community,
Courtney

STAY IN TOUCH

JOIN US AT ANY OF THE FOLLOWING SOCIAL MEDIA



MERRIMACKREPERTORYTHEATRE



@MERRIMACKREPERTORYTHEATRE



MERRIMACKREPERTORYTHEATRE



Chris Thorn, Alexis Bronkovic, and the Youth Cast. Production of A Christmas Carol (2023). Photo by Meg Moore/megpix.com.

Manny Cavaleiro

Michael Cavaleiro

CAVALEIRO'S Steakhouse

573 Lawrence Street
Lowell, MA 01852

Phone: 978-458-2800

This spotless
performance
sponsored
in part by

Anton's
CLEANERS
You've never looked better

www.antons.com

fuse bistro

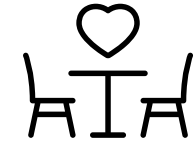
walking distance to MRT

Open 7 days a week

chef owned est. 2011

www.fusebistro.com

Eat Local



YOU ARE INVITED TO

Live Music EVERY NIGHT

— ◆ —

BACKPAGE

CAFÉ & BAR

15 KEARNEY SQ. LOWELL, MA
BACKPAGELOWELL.COM
978.285.5156

KW SUCCESS
KELLERWILLIAMS REALTY

CRISTINA MALLOTT
CRISTINA MALLOTT

Christine Maxim
"MAXimize Your Success"
License MA #9036021 & NH #1063983

Cell: (978) 996-7767
christinemaxim@kw.com
www.christinemaxim.com

Office: (978) 475-2111
138 River Rd. #107
Andover, MA 01810

Each Office is Independently Owned and Operated



YOUR SUPPORT MAKES LIVE
THEATRE POSSIBLE.


**DONATE
TODAY!**

MRT.ORG/SUPPORT/DONATE

Rizzos
ROAST BEEF & PIZZA

**WE'RE WAY
MORE THAN
JUST A GREAT
PIZZA PLACE**

Fry one of our delicious burgers, great sandwiches, fresh salads, and more!



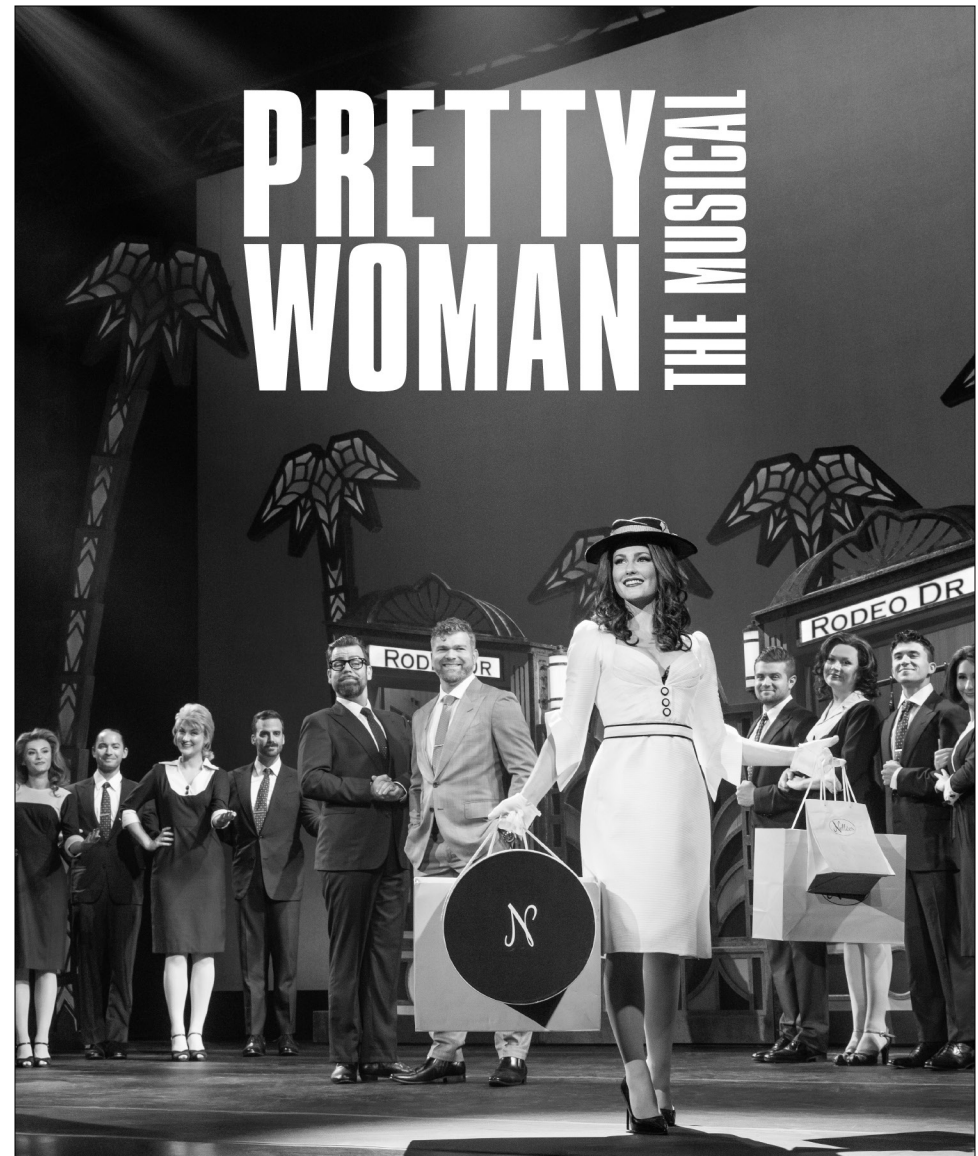
Proud supporter of the Merrimack Repertory Theatre

OWLSTAMP Visual Solutions
Since 1912
www.owlstamp.com

- Full Service Printing
- Marketing Services
- Large Format Printing
- Signs & Banners
- Promotional Products
- Awards & Recognition
- Engraving
- Stamps & Seals

We've been the solution all along. Get to know us.

978.452.4541 | info@owlstamp.com
31 1st Street | Lowell, MA 01850



FEBRUARY 1
8PM

FEBRUARY 2
2PM

lowellauditorium.com

THANK YOU FOR JOINING US IN 2023-24 SEASON!

PHOTOS BY MEGPIX/MEGHAN MOORE: (1) Alaudin Ullah in *Dishwasher Dreams*. | (2) Celena Lopes in *Red Riding Hood*. | (3) (L-R) David M. Lutken, EJ Zimmerman, and Rob Morrison in *The Porch on Windy Hill*. | (4) The Youth Cast in *A Christmas Carol*. | (5) (L-R) Kristin Yancy and Tom Coiner in *Gaslight*. | (6) Dael Orlandersmith in *Spiritus/Virgil's Dance*. PHOTO BY SETH FREEMAN. | (7) (L-R) Tom Coiner, Chris Thorn, Karen McDonald, Alexis Bronkovic, Kristin Yancy, and The Youth Cast in *A Christmas Carol*.





PRESENTS

A CHRISTMAS CAROL

BY
CHARLES DICKENS

ADAPTED AND DIRECTED BY
COURTNEY SALE+

FEATURING | ADULT CAST

ALEXIS BRONKOVIC*
TOM COINER*
HEATHER CONTI-CLARK
JOHN PATRICK HAYDEN*
KAREN MACDONALD*
CHRIS THORN*

FEATURING | YOUTH CAST | GREEN

SAM BELKNAP
NATHAN ICART
MARLOWE MUISE
SKYLER ROY
CAROLINE TRAHAN

FEATURING | YOUTH CAST | RED

ELLIE BRANCO
IAN DESOUZA
GWEN POIRIER
SHAYLA ROURKE
MAGGIE WILSON

SCENIC DESIGNER

SHELLEY BARISH

COSTUME DESIGNER

BECCA JEWETT

LIGHTING DESIGNER

BRIAN LILIENTHAL^

COMPOSER/SOUND DESIGNER

ROB WITMER^

MUSIC DIRECTOR

KAREN OSTER

STAGE MANAGER

BRIAN ROBILLARD*

ASSISTANT STAGE MANAGER

KENDRA WAUGH

DIRECTED BY

COURTNEY SALE+

DECEMBER 11-29, 2024

Enterprise Bank

PRESENTING SPONSOR

KAREN MACDONALD*
ARTIST SPONSOR—KATE & MARK REID

CHRIS THORN*
ARTIST SPONSOR—JUDY BENSON & GEOFF WEBSTER

*Appearing through an Agreement between this theatre, Merrimack Repertory Theatre, and Actors' Equity Association, the Union of Professional Actors and Stage Managers in the United States

^Member of United Scenic Artists

+Member of the Society of Stage Directors and Choreographers

CAST

	Alexis Bronkovic*	Sister of Mercy, Belle, Mrs. Cratchit, Broker 1, et al.
	Tom Coiner*	Marley, Adult Scrooge, Bearded Gent, Broker 2, et al.
	Heather Conti-Clark	Mill Girl, Past, Future, Guest at Fred's Party, et. al
	John Patrick Hayden*	Fred, Old Joe, Schoolmaster, Poulterer's Man, et. al
	Karen MacDonald*	Charles Dickens/Scrooge
	Chris Thorn*	Bob Cratchit, Fezziwig, et al.
	Sam Belknap	Poulterer's Kid, et. al
	Nathan Icart	Peter, et. al
	Marlowe Muise	Tiny Tim, et. al
	Skyler Roy	Belinda Crachit, et. al
	Caroline Trahan	Fan, et. al
	Ellie Branco	Tiny Tim, et. al
	Ian DeSouza	Poulterer's Kid, et. al
	Gwen Poirier	Peter, et. al
	Shayla Rourke	Belinda Crachit, et. al
	Maggie Wilson	Fan, et. al

YOUTH CAST | GREEN

YOUTH CAST | RED

ADDITIONAL PRODUCTION CREDITS

Carolyn Abraham	Production Assistant
Casey Mitchell	Youth Cast Supervisor
David Hochoy	Choreographer
Emily Allinson	Props Artisan
Adam Smith	Associate Sound Designer
Kelly Baker	Wardrobe Crew



*Member of Actors' Equity Association, the Union of Professional Actors and Stage Managers in the United States.



+Member of the Society of Stage Directors and Choreographers, a national theatrical labor union.



^The Scenic, Costume, Lighting, and Sound Designers in this production are represented by United Scenic Artists (USA) Local USA-829, IATSE.



Merrimack Repertory Theatre is a constituent of Theatre Communications Group (TCG), the national organization for the American theatre.



Merrimack Repertory Theatre operates under agreements between the League of Resident Theatres (LORT), a consortium of regional theatres throughout the nation, and AEA (Actors' Equity Association), SDC (Stage Directors and Choreographers Society), and USA (United Scenic Artists).

THE VIDEOTAPING OR MAKING OF ELECTRONIC OR OTHER AUDIO AND/OR VISUAL RECORDINGS OF THIS PRODUCTION AND DISTRIBUTING RECORDINGS OR STREAMS IN ANY MEDIUM, INCLUDING THE INTERNET, IS STRICTLY PROHIBITED, A VIOLATION OF THE AUTHOR(S)'S RIGHTS AND ACTIONABLE UNDER UNITED STATES COPYRIGHT LAW

WHO'S WHO

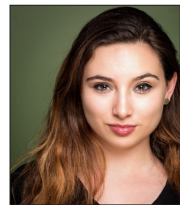


ALEXIS BRONKOVIC (Performer; Sister of Mercy, Belle, Mrs. Cratchit, Broker 1, et al.) she/her/hers. **MRT:** *Frankenstein* (Claire Clairmont, et al), *A Christmas Carol* (Mrs. Cratchit, Belle, et al.), *Macbeth* (Macbeth, et al.), *Silent Sky*, earned Best Actress IRNE nomination (Henrietta Leavitt), *Miss Bennett: Christmas at Pemberley* (Elizabeth Darcy), *The Wickhams: Christmas at Pemberley* (Elizabeth Darcy) **Off-Broadway/ New York:** *The Big Broadcast* (The Barrow Group Theatre), *Tiny Geniuses* (Fringe NYC at the Here Arts Center) **Regional:** *Born Yesterday* (Billie Dawn), Guthrie; World Premiere of *The Folks at Home* (Brittany/Alice), Baltimore Center Stage; *Miss Bennet: Christmas at Pemberley* (Arizona Theatre Company), *Amadeus* (Maltz Jupiter Theatre); *A Christmas Carol* (Actors Theatre of Louisville), *Postwave Spectacular*, *Heist* (Humana Festival ATL) **TV:** *Blacklist*, *Law & Order: SVU* as Amberlynn Rollins (NBC), *The Girls on the Bus* (HBO), *Uncoupled* (Netflix), *FBI Most Wanted*, *Blue Bloods* (CBS), *Younger* (Paramount), *The Affair* (Showtime), *Royal Pains* (USA) **Film:** *Spray Away*, *Oleander*, *The Reunion*, *How to Say Goodbye*, *Jimmy & Don*, *Veritaphobia*, *On Settling Down*, *Julia* **Education:** Marymount Manhattan College, Actors Theatre of Louisville Professional Training Company Other: Thrilled to be back at MRT! Thanks to TMT Entertainment. Love to Mom, Dad,

Kirs, Chess, Teo, B&K, and Fire Dragon.



TOM COINER (Performer; Marley, Bearded Gent, Adult Scrooge, Broker 2, et al.) Tom Coiner is thrilled to be returning for MRT's 46th season. Tom was born in Marlborough, went to Kenyon College, and got his MFA from the National Theater Conservatory. Off-Broadway: *The Daughter in Law* (Mint Theater), *God Said This* (Primary Stages). **MRT:** *Gaslight*, *The 39 Steps*, *A Christmas Carol*, *Silent Sky*. **Other Theatres:** *The Winter's Tale*, *39 Steps* (Utah Shakespeare Festival), *The Invisible Hand* (Milwaukee Rep), *The Full Catastrophe*, *On Clover Road*, *Wrecked*, and *Support Group for Men* (Contemporary American Theater Festival), *God Said This* (Humana Festival), *Good Men Wanted* (New York Stage & Film), *Both Your Houses*, *Our Betters*, *The Little Foxes*, and *The Great Society* (Asolo Rep). **TV:** *Law & Order: SVU*, *The Good Fight*, *Boardwalk Empire*, *The Night Of*, *Person of Interest*, *It's Bruno!* **GAMES:** *Red Dead Redemption 2*.



HEATHER CONTI-CLARK (Performer; Mill Girl, Past, Future, Guest at Fred's Party, et. al) Heather graduated from Western Conn. State Univ. with her BFA in Musical Theater after having received her Associates Degree from

WHO'S WHO

Middlesex Comm. College. You would have seen her most recently in SRT's *Frankenstein* (Elizabeth Lavenza/Fem. Creature) *Rocky Horror* (Usherette) or at Rochester Opera House in *Godspell* (Learn Your Lessons). She was a part of the Seacoast Rep 2023 Company in *Rocky Horror* (Columbia), *BatBoy* (Ruthie Taylor), *HAIR* (Crissy), *Newsies* (Spot Conlon), *Ghost* (Featured Dancer) and *Parade* (Iola Stover). **Regional Credits:** *The Crucible* (Abigail Williams*) *The Sound of Music* (Liesl) *Sweeney Todd* (Beggar Woman) *Fun Home* (Medium Alison) *West Side Story* (Anybods) *The Wizard of Oz* (Dorothy) *All Shook Up* (Miss Sandra) She is always grateful for her family's never ending love and support, and to Karen Oster for all of her chances to grow as a performer. "Never stop following your dreams" <3 Instagram: @heathercc01

*Nominated for BroadwayWorld NH Theatre Awards "Best Performer in a Play"



JOHN PATRICK HAYDEN (Performer; Fred, Old Joe, Schoolmaster, Poulterer's Man, et. al) he/him/his. **New York:** Broadway Tartuffe with Roundabout Theatre Co. Off Broadway with the Barrow Group and Lincoln Center. **Regional (favorites):** *BornYesterday* (The Guthrie Theatre); *Hedda Gabler* (Hartford Stage); *Death of A Salesman*

(Denver Center); *Other Desert Cities* (Pittsburgh Public); *Misanthrope* (NJ Shakespeare Festival) *Noises Off* (Bucks County Playhouse); *Hamlet, Les Liaisons Dangereuses*, and *The 39 Steps* (Northern Stage). **TV:** Recurring Roles: *Fleischman is in Trouble* (FX), *Pretty Little Liars* (HBO), and *Daredevil* (Marvel; Netflix); Guest Stars: *FBI*, *Law and Order*, *Younger*, *Blue Bloods*, *Blindspot*, and *Chicago Fire*. **Education:** BFA ACTING Florida State University and as a filmmaker he was awarded a student BAFTA for his films while gaining his MFA in Directing Film from CCNY Film School. Thank you to 44 West management, and love to Fire Tiger.



KAREN MACDONALD (Performer; Charles Dickens/Scrooge) she/her/hers. Karen has appeared at MRT many times, over the years, most recently as Elizabeth in *Gaslight* and is delighted to be playing Ebenezer Scrooge for the third year. She just completed a run in the title role of *Pru Payne* (Speakeasy Stage). She has appeared on many Boston/ New England stages including the Huntington Theatre Company, Commonwealth Shakespeare Company, Trinity Rep, Hartford Stage, Portland Stage, The Lyric Stage, Speakeasy Stage and with the Boston Pops and the Boston Symphony Orchestra. As a Founding Company Member of the American Repertory Theatre, she

WHO'S WHO

appeared in 73 productions, in both the US and Europe. On Broadway, she understudied and performed the role of Amanda Wingfield in John Tiffany's production of *The Glass Menagerie*. New York credits include Theatre for a New Audience, Roundabout Theatre and Second Stage. Nationally, she has worked extensively from The Wilma Theater to Berkeley Rep. She is the recipient of the Robert Brustein Award for Sustained Achievement in the Theatre and the Eliot Norton Prize for Sustained Excellence.



CHRIS THORN (Performer; Bob Cratchit, Fezziwig, et al.) **Broadway:** *Death of A Salesman* (2022), *Bernhardt/Hamlet*

(Roundabout) **Off-Broadway:** *Greater Clements* (Lincoln Center), *Pride and Prejudice* (Primary Stages), *Twelfth Night* (Pig Iron), *Miss Lily Gets Boned* (Studio 42), *King John* (NY Shakespeare Exchange), *The Bird and the Two-Ton Weight* (EST), *The Most Damaging Wound* (The Production Co. NYIT Award nomination), **Regional:** The Acting Company, Merrimack Repertory Theatre, The Guthrie, Hudson Valley Shakespeare Festival, CATF, Barrington Stage, Delaware Theater Company, The Fulton Theatre Company, Theaterworks Hartford, Boston Playwright's. **Film/TV:** *Madam Secretary*, *Evil*, *The Good Fight*, *Girls on the Bus*. Training: Boston University BFA. University of Idaho MFA. He is a native of South Berwick, ME.



SAM BELKNAP (Performer; Green Youth Cast—Poulterer's Kid, et al) Sam Belknap is a 5th grader at Groton-Dunstable Middle School where he loves writing, math, choir and drama. Sam has been dancing for two years at Studio Rhythm Dance Center and sings in the Harmonia Choir at Groton Hill Music Center. Sam has performed in many plays including *Jiggin' At The Jug* at the Strand Theater in Boston. Sam's favorite roles include Hans (*Frozen Jr.*), Frederic (*Pirates of Penzance*) and Lord Farquaad (*Shrek Jr.*).

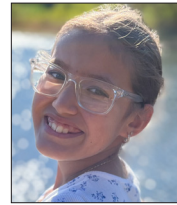


NATHAN ICART (Performer; Green Youth Cast—Peter, et al) he/him/his. Nathan is overjoyed to take part once again in *A Christmas Carol* with MRT (Merrimack Repertory Theatre)! He is an 8th grader at the Innovation Academy Charter School (IACS) in Tyngsborough where he is a part of the Student Council, enjoys writing poems for his Language class and is a member of the Choir. He lives in Dracut MA with his parents and 3 siblings. During his free time he loves to swim, play the piano, and write poems. He deeply loves the arts and hopes to pursue his career in acting. Nathan would like to thank his amazing family, friends and everyone here at MRT for all their love and support. Enjoy the show!

WHO'S WHO



MARLOWE MUISE (Performer; Green Youth Cast—Tiny Tim, et. al) Marlowe Muise is currently a fifth grader in Burlington, MA. She enjoys musical theatre, and she was in the Burlington, B.E.S.T summer youth production of *Matilda Jr.* She plays lacrosse and enjoys playing goalie. Marlowe loves her two newly adopted dogs, Monkey and Otis. One day, she hopes her younger brother will join her on stage.



SKYLER ROY (Performer; Green Youth Cast—Belinda Crachit, et. al) Skyler is an 11 year old honors student at the Butler Middle School, she is proud to be back for her third appearance in a MRT production having played Fan in last year's *A Christmas Carol* and in *Newsies Jr.* last summer. In her spare time she enjoys cross country, rollerblading and kung-fu where she recently obtained her junior black belt. Enjoy the show! Let's go Bulldogs!



CAROLINE TRAHAN (Performer; Green Youth Cast—Fan, et. al) Caroline Trahan is a 10-year-old actress making her stage debut in the production of *A Christmas Carol*. She is excited to be part of this classic holiday story, where she plays

Fan Scrooge alongside this talented cast. Outside of acting, Caroline enjoys reading, singing, dancing and spending time with her friends and family. She's looking forward to future opportunities in theater and is grateful for the chance to share the magic of live performance.



ELLIE BRANCO (Performer; Red Youth Cast—Tiny Tim, et. al) Ellie is a fourth grade student at the Immaculate Conception School. She is thrilled to be back at MRT to reprise her role as Tiny Tim. She recently appeared as Spot Conlon in the MRT and MCC Summer Stage production of Disney's *Newsies Jr.* Aside from singing and dancing, her other interests include lacrosse, basketball and volleyball. She would like to thank her family for supporting her love of the theater.



IAN DESOUZA (Performer; Red Youth Cast—Poulterer's Kid, et. al) Ian was born in Lowell MA, he is a 9 year old who enjoys sports, reading, socializing and playing piano, Ian is a kind, respectful person, he cares for animals and nature, Ian is a 4th grade student at Pyne Arts Magnet School, he is looking forward to performing.

WHO'S WHO



GWEN POIRIER

(Performer; Red Youth Cast—Peter, et. al) Gwen Poirier is excited to be playing the role of Peter Cratchit in *A Christmas Carol*. She has previously played the role of Annie in *Annie* at her school and the role of Ariel in *The Little Mermaid Jr.* at Acting Out Theater Company in Lawrence. She dreams of one day becoming a tv and film actress.



SHAYLA ROURKE

(Performer; Red Youth Cast—Belinda Crachit, et. al) Shayla is so grateful and honored to take part once again in *A Christmas Carol* with MRT for her third showing. This is her fourteenth main stage production overall. Favorite credits include *A Christmas Carol* (Mattie Cratchit (2022), Belinda Cratchit (2023)), *Mary Poppins* (Winifred Banks), Disney's *Finding Nemo Jr.* (Dory), Disney's *Newsies Jr.* (Ethel Bowery brigade), *Legally Blonde Jr.* (Whitney, et al.), Disney's *The Aristocrats Kids* (Amelia), *Willy Wonka Jr.* (Matilda), *Frozen Jr.* (Young Elsa) and many more. Shayla is a 8th grader in Lowell where she is part of the drama club. When not acting, Softball is her second favorite activity along with spending time with friends and family. Thank you to the cast and crew for making this experience in my entire acting career once again.



MAGGIE WILSON

(Performer; Red Youth Cast—Fan, et. al) A fifth-generation Lowellian, Maggie is a sixth grader at Innovation Academy Charter School. Born in California, Maggie moved to Lowell at five months old. She enjoys lacrosse, cross country, and hanging with her friends and cousins—the Dolans, Wilsons, Tighes, Jaraczes, and Teixeiras. Her stage credits include *The Day the Crayons Quit* and *Six: The Musical*. After two seasons playing Tiny Tim in MRT's *A Christmas Carol*, Maggie is excited to step into a new role this year.

COURTNEY SALE (Director, Nancy L. Donahue Executive Artistic Director) she/her/hers. Courtney proudly serves as the MRT's Executive Artistic Director. She joined the company in March of 2020 and is honored to work for a remarkable organization with incredible people. At MRT she has directed *The Search for Signs of Intelligent Life in the Universe*, *Gaslight*, *The 39 Steps*, *A Woman Of The World*, and *A Christmas Carol*. Playwrights commissioned under her tenure include Trista Baldwin, Vichet Chum, Kevin Kling, Melinda Lopez, Dael Orlandersmith, James Still, Klean Ung, and launched the Sokhary Chau Playwriting Fellowship. Under her leadership, MRT has increased service to students, strengthened its partnership in community, and ensured artistic excellence. She serves

WHO'S WHO

on Lowell's Canal Cultural District Management Committee. Courtney's directing has been seen across the country: *Tiny Beautiful Things* (Seattle Rep), *The Overview Effect*, *Support Group For Men*, *The Cake*, *Wild Horses*, *Not Medea* (Contemporary American Theater Festival), *The Mountaintop*, *The Mousetrap*, *April 4 1968*, (Indiana Rep, also Associate Artistic Director 2013-2016), *Gaslight* (Cincinnati Shakes), *On Clover Road* (Phoenix Theatre), *Twelfth Night* (IndyShakes). She previously served as the Artistic Director at Seattle Children's Theatre (SCT), the nation's leading generator of new work for family audiences. She has developed new work with the Denver Center, New Harmony Project, Dorset Theatre Festival, Emerson Stage, TheatreWorks Silicon Valley, and the Orchard Project. Other distinctions include Cornish College Distinguished Alumni Award, IBJ's 40 under 40 designation, and the 2017 keynote at the International Council of Fine Arts Deans. Courtney is a member of the National Theatre Conference. BFA, Cornish College of the Arts. MFA, The University of Texas at Austin.

SHELLEY BARISH (Scenic Designer) she/her/hers. Shelley is excited to return to Merrimack Repertory Theatre. Design credits include **Off-Broadway:** Théâtre Row: *Gideon's Knot* **Regional:** Lyric Stage Company of Boston: *Preludes*, *A Gentleman's Guide to Love and Murder*, *The Wolves*, *Hold These*

Truths, *Camelot*, *Becky's New Car* and *Dear Elizabeth and Murder for Two*; **Regional:** Wheelock Family Theatre: *Matilda*; Greater Boston Stage Company: *Beehive*, *The Irish and How...*, *39 Steps*, *Incident of our Lady...*, *Little Women*, & Central Square Theatre: *Pipeline*, *Young Nerds of Color*. Peterborough Players: *Tell me on Sunday*, Cortland Repertory Theatre: *The Addams Family*, *Newsies*, *Legally Blonde*, *Cards on the Table*, Bristol Valley Theatre: *Boom!*, *Barefoot in The Park*, *Private Lives*, *Next Fall*. Shelley is a Professor and Coordinator of the Theatre Arts Program at UMASS Lowell. She received her M.F.A from Michigan State University. shellebarish.com

BECCA JEWETT (Costume Designer) **Merrimack Repertory Theatre:** *A Christmas Carol*, Former Costume Shop Manager. **Regional:** Costume Designer for: Speakeasy's production of *A Strange Loop*, ASP's *King Hedley II*, New Rep's *A Raisin in the Sun* and *Diaspora*. Assistant Costume Designer for: Huntington Theatre's *Heart Sellers*. **Education:** MFA from Boston University. Becca is a Costa Rican-American costume designer who is based in Boston, MA. She focuses her work on telling stories that uplift marginalized groups and allow them to tell their stories. She was the 2015 recipient of the Virgil C. Jonson Award for Excellence in Costume Design. She is currently working with various theaters in town as well as heading the Dye shop for the Santa Fe Opera. She has been a guest lecturer at

WHO'S WHO

Merrimack College, UMass Lowell and UMass Amherst. Becca enjoys many facets of the costume world and has been the Costume Shop Manager at MRT and a Draper at the Tony award winning Huntington Theatre Co. She is the owner of Becca Jewett Costumes which specializes in Costume Crafts and Dye work. She looks forward to working on many new creative projects.

BRIAN LILIENTHAL (Lighting Designer) he/him/his. Previous at MRT: 38 Productions including: *I and You, the realness: a break beat play, Silent Sky, 45 Plays...., A Christmas Carol ('22)*. **Regional:** Over 300 productions including: 60 productions at Actors Theatre of Louisville, Alley Theatre, Arden Theatre Company, Arizona Theatre Company, Capital Rep, Cincinnati Playhouse in the Park, Cleveland Playhouse, GEVA Theatre Center, Gloucester Stage, Hartford Stage, The Huntington Theatre, The Kennedy Center, Milwaukee Rep, Pasadena Playhouse, Playmakers Repertory Theatre, South Coast Repertory, over 30 productions at Trinity Repertory Company, among others. He has won the Los Angeles Ovation Award for lighting design, as well as the 2016 Artistic Achievement Award from Merrimack Rep, and has been nominated multiple times for Boston's IRNE and Norton Awards. MFA: California Institute of the Arts. Mr. Lilienthal teaches lighting design at Tufts University. He is an in demand drummer in the Metro Boston

area working with country, indie-folk, jump blues, and americana bands.

ROB WITMER (Sound Designer) Rob is a freelance composer and designer from Seattle, Washington. He was seen previously at MRT in *Best Summer Ever*. Other recent credits include: *The Lehman Trilogy*; *Mrs. Loman is Leaving* (ACT Contemporary Theatre); *Jubilee, A Thousand Splendid Suns*, (Seattle Opera); *The Moors* (Seattle Public Theatre); *Murder on the Links* (North Coast Rep/Laguna Playhouse); *Camelot, Once on this Island* (Village Theatre) and *Romeo & Juliet* (Seattle Shakespeare Company). His sound designs have also been heard at Seattle Rep, Spectrum Dance Theater, and Teatro ZinZanni. Rob is a member of United Scenic Artists, USA 829.

KAREN OSTER (Music Director) she/her/hers. Chair of Performing Arts, Middlesex Community College, BFA from The Boston Conservatory, M.Ed from Cambridge College, PH.D candidate Lesley University. Karen has directed and coordinated the performances of young cast members in numerous productions including the Broadway/National tour of *Joseph and the Amazing Technicolor Dreamcoat*, and Paul Simon's *The Capeman* on Broadway with Marc Anthony. Karen is a professional musician and actress as well, having performed in various productions including: *Nunsense, Swingtime Canteen*, and *Pump Boys and Dinettes*. She has performed at The Denver Center for

WHO'S WHO

the Performing Arts, Fullerton Civic Light Opera, Weston Playhouse, Charles Playhouse, Seaside Repertory Theatre, Royal Poinciana Playhouse and The Parker Playhouse. Karen has studied with well-known cabaret artists: Margaret Whiting, Julie Wilson, Andrea Marcovicci, and Craig Carnelia. And has directed and produced the revival of *The Baker's Wife* with composer/lyricist Stephen Schwartz. Her adaptation of *The King and I* (G2K) is currently licensed for performance throughout the country.

BRIAN ROBILLARD (Production Stage Manager) he/him/his. Brian returns to Merrimack Repertory Theatre after previously stage managing *How High the Moon: The Music of Ella Fitzgerald*, and *The 39 Steps*. **National Tour:** *Menopause The Musical!* **Regional** credits include *Crazy for You, The Cher Show, Young Frankenstein, Jersey Boys*, and *Smokey Joe's Café* (Ogunquit Playhouse) *Jersey Boys* (North Shore Music Theatre) *An American in Paris, Pippin, West Side Story* (Reagle Music Theatre) *Macbeth, Cymbeline, Romeo & Juliet* (Commonwealth Shakespeare Company) Brian received his BFA in Stage Management from Boston University and is a proud member of Actor's Equity Association.

KENDRA WAUGH (Production Assistant Stage Manager) she/her/hers. Her recent credits include working with the Ogunquit Playhouse on

their 2024 Mainstage Season (Deck Crew/Props Runner), and following this production she will be working with Commonwealth Shakespeare Company's Stage2 production of *Macbeth* (Production Stage Manager). She'd like to thank the cast & crew for all their hard work and her parents & sisters for all their support. She hopes you enjoy the show!

EMILY ALLINSON (Props Artisan) she/her/hers. **Merrimack Repertory Theatre:** Props artisan for *Frankenstein, Gaslight, A Christmas Carol, The Porch on Windy Hill*, and *The Search for Signs of Intelligent Life in the Universe*. **Regional:** Greater Boston Stage Company (*Boulevard of Bold Dreams, Clue, Titanish, Dial M for Murder, Guys and Dolls*) Peterborough Players (All productions since 2018 including *The Drowsy Chaperone, She Loves Me, Our Town, Cabaret, Noises Off*, and *The Man of La Mancha*). Emily has been working as a props supervisor/designer and theatre technician in New England since graduating college in 2017. Primarily, she is the props supervisor for the Peterborough Players in New Hampshire.

CASEY MITCHELL (Youth Cast Supervisor) she/her/hers. Casey is pleased to be joining MRT for the first time this year. She has a B.A. in Theatre from American University in DC. She worked as a Production Assistant at AU's Greenberg Theatre as well as with

WHO'S WHO

the Spoleto Festival USA in Charleston, SC. For the last 10 years she has been an educator, earning an M.Ed. in Elementary Education from George Mason University in VA. Most notably, Casey taught 4th grade for five years. She is thrilled to be working with the Youth Cast of *A Christmas Carol!*

MERRIMACK REPERTORY THEATRE (www.mrt.org) Merrimack Repertory Theatre (MRT) builds community through theatre. Our shows celebrate new stories, new interpretations of classics, new voices on stage, new audiences, and new collaborations that help people feel, think, and connect.

As one of the leading performing arts organizations in the Merrimack Valley, we aim to enhance the quality of life in our region by creating space for joy, thought, conversation, and shared experiences. We are a hub for compassionate community, dynamic cultural expression, learning experiences, and economic vitality.

We lead with artistic excellence. We foster a culture of belonging and inclusion. We embrace lifelong learning and education. We practice sustainable stewardship of resources.

As a non-profit, we aim to provide a welcoming and inclusive space for all. We partner with businesses and other non-profits to fully engage the community; and contribute to the economic

and cultural vitality of Lowell.

Recent acclaimed productions include *Spiritus/Virgil's Dance*, *The Porch on Windy Hill*, *Letters from Home*, *The 39 Steps*, *Best Summer Ever*, *Erma Bombeck: At Wit's End*, *Miss Bennet: Christmas at Pemberley*, the bestselling production in MRT's history, and *The Wickhams: Christmas at Pemberley*, both by Lauren Gunderson and Margot Melcon; *Cambodian Rock Band* by Lauren Yee and *KNYUM* by Vichet Chum, works in celebration of Lowell's Cambodian community; *The Haunted Life*, a world premiere adaptation of Jack Kerouac's unfinished novel; the world premiere of *The Rise and Fall of Holly Fudge* by Trista Baldwin; and plays about the Black experience, including *Until the Flood* by Dael Orlandersmith, *Nina Simone: Four Women* by Christina Ham, and *Back Together Again: The Music of Roberta Flack and Donny Hathaway*.

SAVE THE DATE



MRT GALA JUNE 6, 2025

ARTIST SPONSORSHIP PROVIDES AN OPPORTUNITY TO CELEBRATE AND ENGAGE WITH ONE OF MRT'S MOST IMPORTANT STAKEHOLDERS: ARTISTS

THE SPONSORSHIP WILL SUPPORT A GUEST ACTOR, DESIGNER, OR DIRECTOR FOR A PRODUCTION.

AN ARTIST SPONSOR WILL RECEIVE WRITTEN/VERBAL ACKNOWLEDGEMENT IN A VARIETY OF WAYS. ALSO, A SPONSOR WILL RECEIVE A ONE-OF-A-KIND PERSONAL INTERACTION WITH THE ARTIST DURING THE REHEARSAL/PRODUCTION PROCESS.

FOR MORE INFORMATION, PLEASE CONTACT KRISTIN MCCAULEY, DIRECTOR OF DEVELOPMENT & ENGAGEMENT, AT KRISTIN.MCCAULEY@MRT.ORG

PROUD TO SUPPORT THE MERRIMACK REPERTORY THEATRE



FALCETTI PIANOS

NATICK • NASHUA • NASHVILLE • SPRINGFIELD

NASHVILLE SHOWROOM
SERVING NASHVILLE & MIDDLE TENNESSEE

SERVING NEW ENGLAND SINCE 1957

YAMAHA | Bösendorfer
SCHIMMEL | ESTONIA

FEATURING
PREMIUM PRE-OWNED
STEINWAY & SONS

falceettpianos.com

Everything Is Better With Bread!



Fresh, Hearth Style European Breads
Homemade Sandwiches | Soups | Pastries & More

Call Us For Your Catering Needs!
(978) 455-4188

Purple Carrot Bread Co.  107 Merrimack St.
Lowell, MA
purplecarrotbreadco.com

 Voted Best Bakery!

BACKPAGE

CAFÉ & BAR



the Keep

Local food, craft beer, and spirits.

110 Gorham St
Lowell, MA 01852
978-310-1933
thekeeplowell.com


We are proud to sponsor
The Merrimack Repertory Theatre



JEANNE D'ARC
CREDIT UNION
we share a common thread



JDCU.com


wbur



**LEND US YOUR EARS.
WE'LL GIVE
YOU THE WORLD.**

Get your news on the WBUR App.



Download now



ABOUT US

The Sahel is a largely semi-arid belt of barren, sandy and rock-strewn land, the Sahel marks the physical and cultural transition between the continent's more fertile tropical regions to the south and its desert in the north. At Sahel Restaurant & Lounge "SAHEL", our leitmotiv is the quality of the food and service. Our menu represents the traditional culinary African and Caribbean cuisines with some Cameroonian-influenced alternatives. SAHEL is situated in the heart of downtown Lowell (City of Lowell, MA) in a 3,500 square feet of newly renovated space just about a mile away from the main campus of UMass Lowell. Sahel is open everyday from 11am to 10pm. SAHEL offers a 200 seats fine dining restaurant upstairs with 75 seats lounge area in the basement lower level.

WE'RE READY TO SERVE YOU

We are ready to plan your event A to Z. Please contact us and let's take care of everything.

CONTACT US

Phone : +1 978-455-3635
 Website : www.sahelrestaurantlounge.com
sahelrestaurantlounge@gmail.com
 135 Central St Lowell, MA 01852.



WHAT WE DO AND OFFER?

SAHEL focus primarily on Afro-Caribbean menu with a touch of French and Cameroonian influence. The menu contains traditional favorites such as Ndole, Egusi Soup, Jerk Chicken, Mofongo, Fufu, Puff-Puff, Attieke, Eru, Manfe, Jollof Rice, Achu Soup,okra Soup, Burgers, Pasta, Burritos, Riz Cole, Griot and Plantains amongst others. These traditional dishes are prepared by recognized chefs. The consistency in delivery the same quality of food and services is the pride of the management.

SAHEL'S front of the house staff members are hired to communicate the menu and specials and enhance your overall dining experience. Our staff goes through extensive training, ensuring high quality customer service.

In addition to in-house dining, the restaurant will offer a full and complete take-out and catering services as well.



POPULAR DISHES

Brochures are now available in electronic format and are called e-brochures.



DANCING JERK CHICKEN

Jerk chicken with pineapple salsa and our award winning jerk sauce. Served with rice of choice.



EGUSI SOUP & FUFU

Made with ground melon seeds, spinach and African spices, served with braised beef. Recommended sides are fufu or fried plantains.



BRAISED OXTAIL

Jamaican braised oxtail with white beans. Fall off the bone tender. Served with sauteed vegetables and rice of choice.



CURRY RASTA PASTA

Penne pasta in a creamy coconut curry sauce with bell peppers and red onions.



NDOLE

A traditional Cameroonian peanut stew made with bitter leaves. Flavored with garlic and crayfish and served with shrimp and beef. Served with rice of choice.



RED SNAPPER /TILAPIA

Baked or fried whole snapper or tilapia served with African tomato stew. Served with side of choice.



CHICKEN STEW (POLLO GUISADO)

Made with bone-in chicken, potatoes, spices, and olives, cooked until tender. Paired with rice of your choice.



WHY CHOOSE US?

We are committed to bringing an upscale and unique dining experience to the region. We have a highly qualified personnel and our facility offers an vibrant, unique and upscale place to dine in alone or with your love ones and/or to host your private or public events.



We are proud to be a sponsor of the MRT's production of
"Lady Day at Emerson's Bar and Grill"

LowellFive[®]
 the relationship bank

With you,
 that's us.



LowellFive.com | 978.452.1300



Albert E.J.
BERGERON
Insurance Agency

**AUTO-FIRE
 HOMEOWNERS
 & RENTERS POLICIES**

PROFESSIONAL SERVICE
 FOURTH GENERATION
 CONVENIENT LOCATION

BERNARD A. BERGERON BROKER
978-453-7391
 235 WHITE STREET LOWELL MA



SINCE 1917

LYRIC STAGE
 CELEBRATING 50 YEARS

NOV 15 - DEC 22
 LyricStage.com | f @
 CELEBRATING 50 YEARS CORPORATE SPONSOR
 BrooklineBank

That's what it's all about: doors & sardines.



2024/25 SEASON SPONSORS:
 Paul Kastner | G. Lee & Diana Humphrey

PRODUCTION SPONSORS:
 Nina & Don Berk



BY
MICHAEL FRAYN
 DIRECTOR
ILYSE ROBBINS

THANK YOU TO OUR 2024/2025 PROGRAMMING SUPPORTERS

- BARR FOUNDATION
 BARR-KLARMAN MASSACHUSETTS ARTS INITIATIVE
 FRED C. CHURCH INSURANCE
 CITY OF LOWELL
 CORNING INCORPORATED COMMUNITY IMPACT & INVESTMENT
 DCU FOR KIDS
 DEMOULAS FOUNDATION
 RICHARD K. & NANCY L. DONAHUE CHARITABLE FOUNDATION
 EASTERN BANK FOUNDATION
 ENTERPRISE BANK
 AUBERT J. FAY CHARITABLE FUND
 GREATER LOWELL COMMUNITY FOUNDATION
 GREATER LOWELL HEALTH ALLIANCE
 GREATER MERRIMACK VALLEY CONVENTION & VISITORS BUREAU
 JEANNE D'ARC CREDIT UNION
 LOWELL CULTURAL COUNCIL
 LOWELL FIVE BANK
 THE MAP FUND
 MASS CULTURAL COUNCIL
 MASS HUMANITIES
 MASSACHUSETTS CULTURAL FACILITIES FUND
 MASSACHUSETTS OFFICE OF TRAVEL & TOURISM
 NATIONAL ENDOWMENT FOR THE ARTS
 THE RAMSEY MCCLUSKEY FAMILY FOUNDATION
 ADELARD A. AND VALEDA LEA ROY FOUNDATION
 THEODORE EDSON PARKER FOUNDATION
 AMELIA PEABODY CHARITABLE FUND
 SAAB FAMILY FOUNDATION
 THE SHUBERT FOUNDATION
 ALBERT P. SLOAN FOUNDATION
 NATHANIEL & ELIZABETH P. STEVENS FOUNDATION
 TRUSTEES OF THE AYER HOME
 UNIVERSITY OF MASSACHUSETTS LOWELL
 YAWKEY FOUNDATION



76 MERRIMACK ST
IN DOWNTOWN LOWELL!



At KOTO, we are passionate about bringing the vibrant tastes of Asian Cuisine to Lowell. Whether something from the sushi bar or our kitchen, we strive to create dishes that are packed with flavor and authenticity. This passion can also be found to be reflected in our creative cocktails and mocktails, and our ever growing selection of beer, sake, and liquors are a matter of pride for us.

As a new edition to the Lowell music scene, we are proud to feature live music as part of our entertainment! Downstairs we offer bands in the comfort of our dining room atmosphere. At Koto Upstairs, we feature a larger venue for big shows and fun!

The upstairs venue is also available for rental to host all your event needs! **Now taking bookings for company holiday parties!**


KOTO LOWELL
 KOTOWELL.COM Koto Asian Fusion Lowell KotoLowell



LADY DAY AT EMERSON'S BAR AND GRILL
 BY LANIE ROBERTSON
FEB 5-23, 2025



REDUCED SHAKESPEARE COMPANY
THE COMEDY OF HAMLET! (a prequel)
 WRITTEN AND DIRECTED BY
 REED MARTIN & AUSTIN TICHENOR
MAR 12-30, 2025



WHAT YOU ARE NOW
 BY SAM CHANSE
APR 23-MAY 11, 2025



Enjoy this Year's MRT shows

Join us for coffee, tea, cocktails & more
Open every day until 9pm

61 Market St Downtown Lowell

Athenian Corner Restaurant & Lounge
A Touch of Athens in Downtown Lowell

Serving Lunch and Dinner 7 MON-SAT
Live Greek and Middle-Eastern Music and
Bellydancing TI Sat. Nights only!

Located Just 4 Blocks from the Theater

Voted "2 Thumbs up"
by Billy Costa's TV Diner Show

207 Market Street, Lowell
Tel. 978.458.7052 - www.atheniancorner.com

• BEHIND THE SCENES • COSTUME SKETCHES • DISC
QUINTS • STAY IN TOUCH! • EXCLUSIVE

• AND MORE! • MEET THE ACTORS

• CONTENT • PRODUCTION PHOTOS • SHOW TRAILERS



@MERRIMACKREPERTORYTHEATRE

EST. 2011

LITTLE DELIGHTS
BAKERY

LITTLE DELIGHTS BAKERY
YOUR DESTINATION FOR DELICIOUSNESS

138 MERRIMACK ST. LOWELL, MA
littledelightsbakery.com
978-455-0040

CUPCAKES COFFEE
BREAKFAST GELATO



Colleen A. Coughlin
Insurance Agency Inc.



Colleen A. Coughlin Kasilowski
President

1794 Bridge Street | Ste#5A
Dracut, MA 01826
P. 978-221-6991 | F. 978-677-6729
Colleen@cacinsurance.com

ALL TYPES OF INSURANCE: AUTO/HOME/UMBRELLA/RECREATIONAL VEHICLES

BUSINESS INSURANCE: GENERAL LIABILITY/PROFESSIONAL LIABILITY/
WORKERS COMPENSATION/COMMERCIAL AUTO/COMMERCIAL UMBRELLA/HEALTH/
LIFE/ACCIDENT/DISABILITY

FULL SERVICE AGENCY
WE ISSUE PLATES ON PREMISES

BOARD OF TRUSTEES

Nancy L. Donahue, **Chair**

Kate Reid, **President**

Susu Wong, **Vice President**

George Villaras, **Treasurer**

Timothy Greenwood, **Secretary**

Joanne Yestramski, **Past President**

Adam Baacke

Judith Benson

Steven Chao

Michael G. Conway

Jeff Guimond

Karen Hartman

Terry T. Howard

Bopha Malone

Georgia McColough

Alyce Moore

Jack Moynihan

Ryan D. Rourke

Evan Schapiro

Philip Sisson

Renée Soucy

Jeffrey Wilson



Kalean Ung in *Letters from Home* (2023).

Photo by Meg Moore/megpix.com.



Alaudin Ullah in *Dishwasher Dreams* (2024).

Photo by Meg Moore/megpix.com.

ANNUAL FUND DONORS

MRT gratefully acknowledges all contributions to the Annual Fund for the 12 months preceding **November 14, 2024**.

Due to space limitations, our listing reflects donors of \$100 and above. Thank you for supporting live theatre.

PRODUCERS CIRCLE, PLATINUM \$25,000 and above

Barr Foundation
City of Lowell
Richard K. & Nancy L. Donahue
Charitable Foundation
Daniel & Mary Frantz
John & Denise Glaser
Klarman Family Foundation
The MAP Fund
Massachusetts Cultural Council
Amelia Peabody Charitable Fund
Mark & Kate Reid
The Shubert Foundation, Inc.
Alfred P. Sloan Foundation
TDC
University of Massachusetts Lowell
Yawkey Foundation

PRODUCERS CIRCLE, GOLD \$10,000 - 24,999

Judy Benson & Geoff Webster
Peggy & Anton Chernoff
Enterprise Bank
The Aubert J. Fay Charitable Fund
Jo Goldman
Greater Lowell Community Foundation
Greater Merrimack Valley Convention &
Visitors Bureau
Dr. Terry & Phyllis Howard
Belinda Juran & Evan Schapiro
Mass Humanities
Massachusetts Office of Travel & Tourism
Susan Mitchell & Jim Waldo
Alyce & John Moore
National Endowment For Arts

PRODUCERS CIRCLE, SILVER \$5,000 - 9,999

George Duncan
Tim & Anita Greenwood
Harrill Family Foundation
Karen & Joseph Hartman
John A. Hunnewell Trust
Lowell Cultural Council
Lowell Five Bank
Donald & Andrea Morgan
The Ramsey McCluskey Family Foundation
The Saab Family Foundation
Drs. Rohini & Ravinder Sakhuja
Mr. & Mrs. Will Soucy
The Nathaniel & Elizabeth P. Stevens
Foundation
Charles & Joanne Yestramski

PRODUCERS CIRCLE, BRONZE \$2,500 - 4,999

Anonymous
Trustees of the Ayer Home
Corning Incorporated Community Impact &
Investment
Jean Donahue, Karen L. Donahue, & Dottie
Sullivan - In Honor of Nancy's Birthday
The Glore Fund
Helen G. Hauben Foundation
Jeanne D'Arc Credit Union
Claire M. Kovacs
K. Bradley & M. McCracken

Anita & Elliot Perkins
Carolyn Walsh & Jack Moynihan

PRODUCERS CIRCLE \$1,000 - 2,499

Anonymous (3)
Baacke/Laput/North Family
Bruce & Sue Bonner
Kathleen Shine Cain
Chubb Charitable Foundation - Matching
Donation
Clark Insurance, A Marsh & McLennan
Agency LLC
Mark & Debbie Curtiss
Elaine Daigle
Richard & Linda Day
DCU For Kids Foundation
Barbara Estrin
Fred & Connie Glore, along with Glore Fund
Donations
Greater Lowell Health Alliance
Gary Gumuchian
Stephen & Suzanne Irish
Monica & Alan Kent, MD
Les & Judy Kramer
Will & Anastasia Lyman
Brian & Elise Martin
Nancy M. Meehan - In Memory of Joseph D.
Meehan
Donald & Lauren Miller
Stephanie Grooms
Frederick L. & Juliet Nagle
Dr. & Mrs. Lincoln Pinsky
Mary Ann Rodrigue - In Honor of Nancy L.
Donahue
Adelard A. & Valeda Lea Roy Foundation
Edward & Maybeth Sonn
Lolli & Richard Sumberg
Martha & Robert Supnik
George & Darlene Villaras
Ruth Glazer White & Hugh J. Glazer - In
Loving Memory of our parents Libbie &
Mel Glazer
Ronald Willett & William Mitchell

BACKER \$500 - 999

Anonymous (3)
Anonymous - In Honor of John Dyson
Scott & Nancy Bartis
Dorothy Boisvert & Petr Honcu
John H. Boss
Cliff & Tricia Bourie
John Broussard
Sue & Randy Brown
Mr. & Mrs. Robert A. Caruso
Clement T. Cole & Margaret E. Marshall
Jim & Susan Cooney
Lawrence DeVito
Eastern Bank Foundation
Alan & Debby Friedman
Jeffrey R. Guimond
Michael Hirsch & Katherine Lobo
Dan & Goo Newman
Richard & Peggy Siegel
Daniel & Tamara Smith
Chris & Tom Stevens
Mr. & Mrs. Michael J. Sullivan
Richard Surko
David Tierney, USMC

Claremarie Toohey
Visnick & Caulfield Associates, Inc. - In
Memory of Libbie M. Glazer
Ruth Glazer White - In Memory of My
Mother, Libbie M. Glazer, long-time MRT
Subscriber & Supporter

COLLABORATOR \$250 - 499

Anonymous (2)
Actors' Equity Foundation
Clementine Alexis
Michael B. Arthur
Leeann Atkinson & Tim Durkee
Peter & Rosemary Aucella
Jeannine Ayotte
Rebecca Backman & Stephen Cotton
Sheila Barter
James & Barbara Battis
Maxa S. Berid
Edward & Deborah Bimbo
Katharine & Brett Bonner
Rahul Bose
Chris & Bruce Brown
Susan Brown
Margaret & William Brown
David & Cheryl Carpenter
Maryrose & Mike Coiner
Steve Joncas - In Honor of Nancy L.
Donahue
Favreau Charitable Fund
Len & Nancy Gerzon
Robert L. Gosselin
Debra Grossman & Kate Tyndall
Ellen Guthrie & John Mankovich
Rob Harris
Carol Ann Hayton
Herbison Family
Michael & Kathleen Hogan
Mary & Robert Johnson-Lally
Bill & Audrey Kilbride
The Harman & Kunkel Families
Ralph Loosigian
Geoff & Katie Lucente
Robert Luoma & Sally Stokes
Michael McCallum
Eric & Carrie Meikle
Alan & Helene Michel
Microsoft Corporation - Matching
Donation
Judy & Gerry Miller
Arthur & Marcia Mittler
Suzanne Nicholas
Andrew & Denise O'Connor
Chris & Cheryl Perkins
Jan Perry & Paul Landrey
Annelise Pitt
Stan & Jan Powers
John & Beverly Roder
Kathryn Roy & Dennis Shedd
David & Cyndy Sawyer
Sara Seekings & Sarah Manning
Barbara & Jim Smith-Moran
Maura & Doug Snow
Brian J. & Cheryl Stafford
Rev. Robert Stetson
Mr. & Mrs. R. Stokken
Jeffrey Stone
Linda Sutter & Steven Centore

BOULAY LAW FIRM, LLC

Sandra M. Boulay, Esq.
Nine Central Street, Suite 402
Lowell, Massachusetts 01852
Tel. 978-452-4100

www.boulaylaw.com

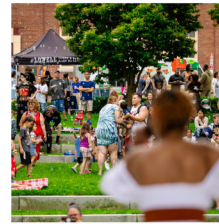
MRT FRIENDS GROUP

WANT TO VOLUNTEER AND HELP MRT CREATE THEATRICAL MAGIC?

Join MRT Friends, a group of volunteers assisting MRT year-round on fundraising events such as the Holiday Raffle and the annual Gala.

TO SIGN UP

Contact Development Coordinator, Kaitlyn Crockett, at kaitlyn.crockett@mrt.org



Mosaic Lowell

Your Guide to Lowell's Vibrant Art & Culture Community

Visit mosaiclowell.org

Follow @mosaiclowell

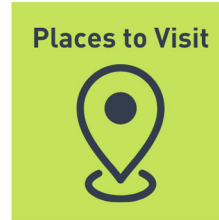
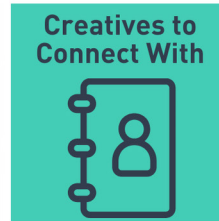


Photo credits: Marte Media



Stay in the know, sign up for our email list!



Mosaic Lowell operates under the fiscal sponsorship of the Greater Lowell Community Foundation.



lala books
WHERE READERS GATHER
OPEN 7 DAYS A WEEK
189 MARKET ST, LOWELL
978-221-5966
lalabookstore.com



83 Parkhurst Rd, Unit 14
Chelmsford, MA 01824
978-937-5023
lowellblueprint@gmail.com

- High Speed digital reprographics, Black and White or Full Color
- 840 "D - size" prints per hour!
- Water & Tear resistant prints
- Scanning of documents up to 42" wide!
- Construction Plans & Spec Books printed
- Enlargements, Reductions & Rescaling
- Mylar Prints - color or black & white
- Shipping and delivery anywhere!

www.lowellblueprint.com
A division of Don Anderson, Inc. ~ custom home design

Lambert-moore artist

Janet Lambert Moore - call 978-459-4003
14 Lawn Ave., Lowell, MA 01852

Original paintings - prints
Large selection of Lowell sites & Commissions accepted



WESTERN AVENUE
THE CREATIVE SOUL OF LOWELL™

LOADING DOCK **gallery**

OPEN WEDNESDAY - SUNDAY

Supporting Lowell's live theatre and local talent in the arts and the art of the handmade.

122 WESTERN AVENUE OFF SCHOOL STREET

VISIT OUR WEBSITE FOR EVENTS YEAR ROUND
WWW.WESTERNAVENUESTUDIOS.COM

@westernavearts / @loadingdockgallery



Photo credit: Daniel Mathieu



THE LIVING LEGACY SOCIETY

Merrimack Repertory Theatre's Living Legacy Society was established to provide a lasting legacy for donors who believe in the mission of MRT.



The Living Legacy Society helps you combine financial goals with charitable giving. When you support MRT with a planned gift to the Living Legacy Society, you can:

- **Secure steady payments throughout your lifetime and increase available income**
- **Reduce income, estate, and capital gains taxes**
- **Ensure support of a loved one after your lifetime**
- **Build lasting support for the greater Merrimack Valley's only professional theatre**

Living Legacy Society gifts may be made through a bequest, a gift of appreciated securities or assets, beneficiary designation of retirement plans or life insurance, a charitable remainder trust, or a gift of property.

Your support will ensure that MRT continues its vital role in arts, education, and community building for years to come.

If you have already made MRT part of your estate plans, we invite you to join the Living Legacy Society. Thank you.

For more information, please contact:

Kristin McCauley, Director of Development & Engagement, at kristin.mccauley@mrt.org.

LIVING LEGACY SOCIETY

Anonymous
 Anonymous*
 Richard K.* and Nancy L. Donahue
 Mr. and Mrs. Winslow H. Duke
 The Estate of Mr. Donald Fulton
 Debra Grossman and Kate Tyndall

Mary E. Harrington*
 Frank and Belva Hopkins
 Jack and Thérèse O'Connor
 R. Edward Roach
 Linda Sutter and Steve Centore
 Bernice and Joseph Weider*

**deceased*

ENDOWED FUNDS

Partners in Education Fund
 Linda Trudel Endowed Scholarship Fund
 Fund for Merrimack Repertory Theatre

ANNUAL FUND DONORS

Nancy J. Teel
 Brooke and Kathryn Wagner

ASSOCIATE \$100 - 249

Anonymous (4)
 Anonymous - In Memory of Judy Lugus
 Anonymous - In Memory of Ruth Sullivan
 Katherine Ahern
 William Moonan & Carol Amick
 Sue Andrews
 Jackie Baker & Ken Jeffries
 Anthony & Lorraine Barbarino
 Mary Bassett
 Chuck Benson
 David A. & Jean Anne M. Betses, In Memory of Libbie M. Glazer
 Elizabeth H. Black
 Lee Walkley Bory
 Fred & Cheryl Boss
 Bopha Boutselis
 Veronica Boutoureira
 Loring Bradlee & Janet Stone
 Michael Breda
 Gail Brodeur
 Jonathan & Ellen Brody
 Peter Bubriski
 Dana Buske & Michael Schneider
 Jane Calvin
 David & Theresa Campbell
 Serena Caperoni
 John & Linda Carson
 Joseph & Joanne Caruso
 Professor Claire Chamberlain
 Ron & Lynn Chaput
 Bill & Kathy Conole
 Michael Conway
 Barbara Costello
 Bob & Mary Cotter
 Charleen Daniels
 Suellen & Stuart Davidson
 Jeffrey DeVoyd
 Maureen F. DiPalma
 Linda J. Dixon
 Joseph Donnelly
 Michael & Jane Duffley
 George & Anna Duggan
 Bruce & Nancy Earnley
 Edgewood Retirement Community
 Pat Egan
 Paul & Lisa Eisenberg
 R. Ellis & C. Kamasaki
 Lenore Evans
 Edward & Monique Fischelli
 John & Joanne Fitzgerald
 Elaine Francis
 Suzanne Frechette
 Carl & Carol Gallozzi
 Gartner - Matching Donation
 Chris & Diane Geggis
 Arthur Giacomarra & Mary E. Bassett
 Ed & Melanie Gillick
 Dr. & Mrs. Michael Golec
 Pauline M. Golec
 Bob Gore
 Jane & David Gossard
 Brian Gourlie
 Simon & Caroline Graham
 Judy Grande
 Daniel Greene
 Cathy Lavoie Griffin & Thomas Griffin
 Sonya Hackel

Deborah Hamilton
 Maureen Hancock
 Sharyn Gallagher
 Kurt & Jennifer Herman
 Susan Hill
 Jodie & Hal Holway
 David & Deborah Horlach
 Beau & Yvonne Howard
 Jim & Marie Hoyt
 Donna Hoyt
 Susan Hoyt
 Ernie & Ellen Huber
 Mark & Emily Hunter
 Kellie Hunter & Peter Monahan
 Christian Huntress
 Paul & Gillian Husted
 Richard Ingram
 Elizabeth R. Jarok
 Pat Kalik
 Garland Kemper & Richard Warner
 Joan & Arnold Kerzner
 Curtis & Mary Jane King
 Herbert Korn & Roberta H. Hodson
 Karen Kowalski, Realtor
 Ken & Jean Kriedberg
 Paul & Pauline Lambert
 Virginia & Marc Lamere
 Dr. Constance Lanseigne-Case
 Marsha Lavoie
 Barbara Leary & Tom Sangiolo
 Karen D. LeBlanc
 Ted Lemire
 Barbara & Allen Levesque
 David & Regina Levine
 Joyce & Billy Limberopoulos
 Robert & Helen Littlefield
 Meredith Lovell
 Lowell Polish Cultural Committee
 Colette P. Lyons
 Leo & Beverly Makohen
 Bob & Kate Malone
 Richard & Mary Ellen Maloney
 Martha Martin
 John & Christina Matthews
 Kathryn May
 Margaret McDevitt
 Richard & Estelle McDuffee
 James F. & Bonnie McIsaac
 Sandra McQuillan
 Barbara Michaud & Donald Agostinelli
 Rev. Paul Millin & Dr. Betty Millin
 Janet Lambert Moore
 William & Ann Morrison
 Lisa & Scott Morton
 Joe Nardoni
 William & Patricia Nickles
 Nancy & Robert Norbedo
 Philip Noyce
 Elaine Nugent
 Cathleen & Bradford O'Neill
 Edward M. Olin Jr.
 The Opalka Family
 Dr. Edward Parsons
 Margaret Pedersen
 James Pelrine
 Ernie Petrides
 Lynn Pompei
 Judith Potter
 Donna Power
 Dr. Russell Prevost
 Jeanne Provencher

Cecile M. Provencher
 D.J. Prowell
 Charles & Frances Przyjemski
 Bill & Debb Putnam
 Cooper Quirry
 Bill Ratcliffe
 Dr. Sarah Richards
 Diane & Michael Ridlon
 Nancy Riese & Vincent Ferrante
 Michelle M. Ritchotte
 Catherine & Wes Robie
 Wyley & Suellen Robinson
 Doug & Margy Roeck
 Esther & Sam Rosenzweig
 Anita Rossiter
 Wanda & Paul Royte
 Janice Ruell
 Stephen Salt
 R. N. Sandberg
 Thomas Sangiolo
 Joellen Scannell
 Lamby Scharff
 Ellenjane Scheiner
 William & Donna Schroeder
 Mary E. Scott
 Brian & Linda Shea.
 Dr. & Mrs. Thomas Shea
 Peter & Karen Silvia
 Carol & Kevin Smith
 Karla Sorenson
 Connie Sprauer & Hans Rutisheuser
 Peter Stanwicks
 Marion Stoddart
 Edward & Eileen Sullivan
 Tom Taylor
 Robert H. Terranova
 Linda & Michael Gallagher
 Mark Tincknell
 Kalean Ung
 Vinnie & Deborah Villano
 Benjamin & Judith Volinski
 Lee E. Vorderer & Bob Bass
 Caryl Walsh
 Washington Savings Bank - In Honor of Libbie M. Glazer
 Elizabeth Weber & William Porteous
 Wellenstein Family
 Jim Wilde
 The Wimbergs
 Warren & Luella Woodford
 Barbara Wrightson

+denotes In-Kind Contributions

We make every effort to provide accurate recognition for our contributors, however occasional errors do occur. To inform us of a correction, please contact Kaitlyn Crockett, Development Coordinator, at kaitlyn.crockett@mrt.org.

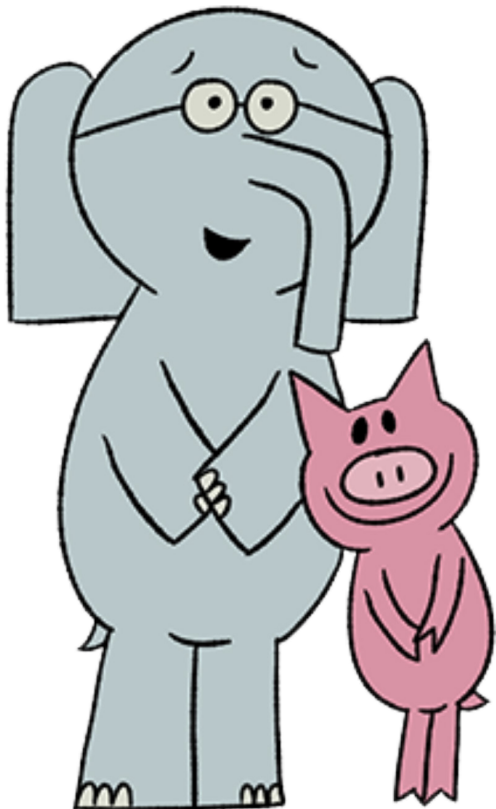
COMING IN JANUARY, YOU DON'T WANT TO MISS...

ELEPHANT AND PIGGIE'S "WE ARE IN A PLAY!"

BOOK AND LYRICS BY
MO WILLEMS

MUSIC BY
DEB WICKS LA PUMA

JAN 25, 2025



SENSORY FRIENDLY
PERFORMANCE

11 AM

&

2 PM



STUDY GUIDE SPONSOR

 MERRIMACK REPERTORY THEATRE
WWW.MRT.ORG | 978.654.4678

MRT STAFF

ARTISTIC

Nancy L. Donahue Executive Artistic Director Courtney Sale
Commissioned Playwrights Vichet Chum, Kevin Kling, Melinda Lopez,
James Still, Kaeon Ung
Sokhary Chau Playwriting Fellow Katie Nhi Đỗ
Resident Dramaturg Allison Backus

PRODUCTION

Production Manager Andrew Andrews
Lighting and Sound Supervisor Michael Finke
Lighting and Sound Assistant Rhiannon Downer
Costume Shop Supervisor Kate Dyson
Company Manager Elena Ring
Production Assistant Carolyn Abraham

ADMINISTRATION

Director of Finance Edgar Cyrus
Director of Development & Engagement Kristin A. McCauley
Director of Marketing Carolyn Andrews
Graphic Designer Emily Boyer
House Manager John Dyson
Box Office Manager Chris Torres
Lead Box Office Representative Davira Kuy
Part Time Box Office Representative Calvin Plunkett
Assistant House Manager & Part Time Box Office Representative Gabby Davis
Database Projects Manager E Larocque
Development Coordinator Kaitlyn Crockett
Marketing & Development Intern Marsha Marcelin
Photographer Meg Moore/megpix.com
Video Kathy Wittman/Ball Square Films
Season Artwork Amanda Gallant

EXCEPTIONAL VETERINARY
CARE FOR ALL YOUR PETS
Convenient Day, Evening & Weekend Hours



Chelmsford
Animal Hospital

ChelmsfordAnimalHospital.com
11 Fletcher Street, Chelmsford, MA 01824



978-256-6011



NOW HIRING!

WE'RE LOOKING FOR
PART-TIME EVENT STAFF
PAY STARTS AT \$15/HOUR

CONTACT
CHRIS@KBK-SPORTS.COM
TO LEARN MORE

 **GIFT
CERTIFICATES**

ANY VALUE! ANY SHOW!
GOOD FOREVER!

mrt.org/GiftCertificates



They soared through clouds only to hit glass ceilings at home.

- FINAL MONTHS
- Closes January 2025

A SPECIAL EXHIBIT ON WWII
SERVICE & SACRIFICE

JFK PRESIDENTIAL
LIBRARY & MUSEUM
jfklibrary.org



ESTABLISHED 2011
LOWELL, MA

Microbrewery
&
Taproom

www.merrimackales.com

MRT HOLIDAY RAFFLE RETURNS

TICKETS \$5 EACH | 5 FOR \$20

- Tickets available at 2024MRTraffle.givesmart.com from 11/8 thru 12/21
- Two amazing & abundant holiday raffle baskets arrive in the Liberty Hall lobby 11/20
- Tickets sold in person at each performance starting on 11/20
- Drawing after the 12/22 matinee performance of *A Christmas Carol*



COBBLESTONES

of Lowell
RESTAURANT & BAR

BRINGING STYLE TO DOWNTOWN
SINCE 1994

moonstones

raw • bar • global • chill

Since 2008

PRIVATE ROOMS, GREAT COCKTAILS, SUNDAY BRUNCH



“I LIVE BY BREAD LIKE YOU, TASTE GRIEF, FEEL WANT, NEED FRIENDS....”

— MACBETH

**TWO GREAT RESTAURANTS
JUST A STONES' THROW AWAY**

